

Updating the USB interface (art. no. 23150) firmware

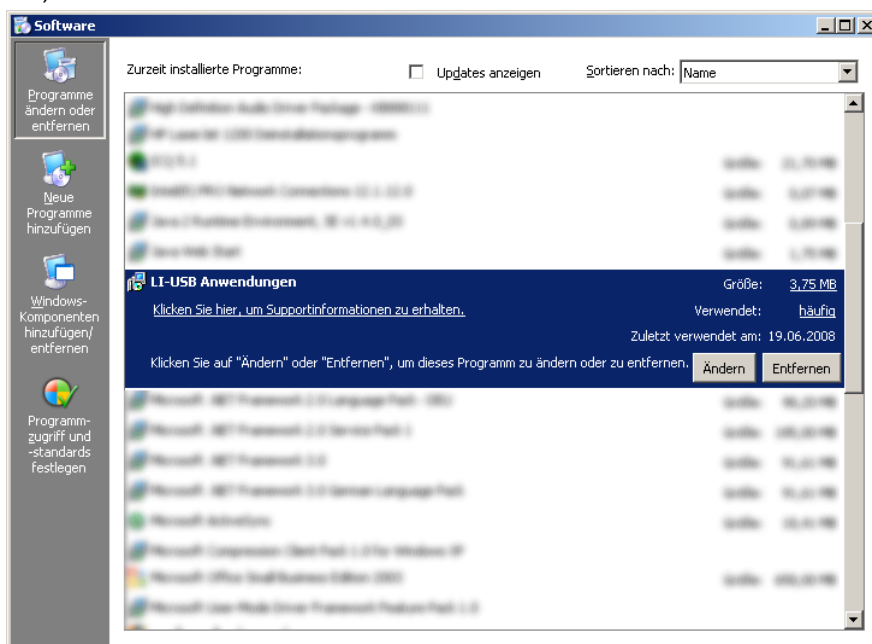
Please note that an update of your USB interface firmware is only necessary if you are operating your LZV100 with software version 3.6.

Do not carry out a firmware update when using version 3.5 or smaller!

Step 1: Uninstalling the current application software:

Uninstall the LI-USB software currently installed on your computer. Do not forget to BACK UP ANY DESCRIPTION FILES for locomotive decoders that you may have created.

Search the entry 'LI-USB Anwendungen' ('LI-USB applications') under 'Software' in the control panel and select 'Entfernen' ('Remove'):



Step 2: Downloading and unzipping the new application software:

Download the zip-file 'LI-USB-Firmwareupdate-V36.zip' from the Lenz Elektronik download page <http://www.lenz-elektronik.com/pdf/LI-USB-Firmwareupdate-V36.zip>

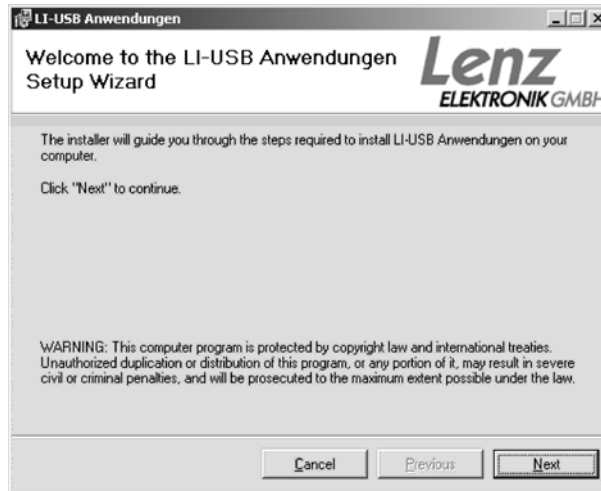
Unzip the installation file 'LI-USB.msi' from the archive 'USB-Firmwareupdate-V36.zip' in a suitable folder on your hard drive.

Step 3: Installing the new application software:

Double-click the file 'LI-USB.msi' to start the installation routine.

The routine is in English.

Follow the instructions on the screen:



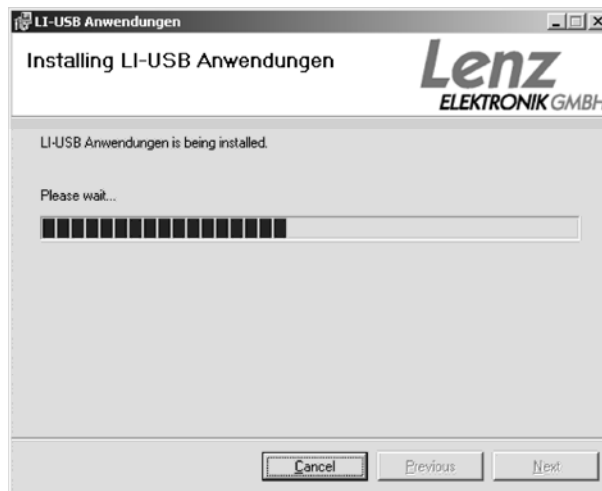
Click 'Next'.



As default, the folder 'C:\Programme\LI-USB\' is suggested for installation.
This default setting can be altered.



Click 'Next'.



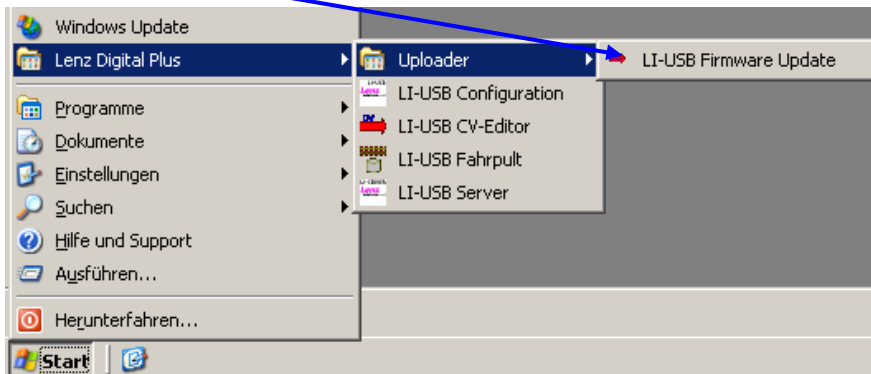
The LI-USB applications are installed on your computer.



This window confirms the successful installation of the applications on your computer. Click 'Close' to complete the installation. You will find four new icons on your desktop.

Step 4: Updating the LI-USB firmware:

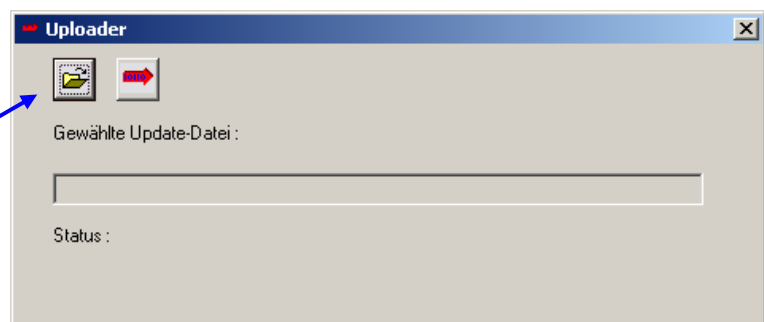
Along with the new application software for the USB interface, the software required to update the firmware was also installed on your computer. It can be found in the Start menu.

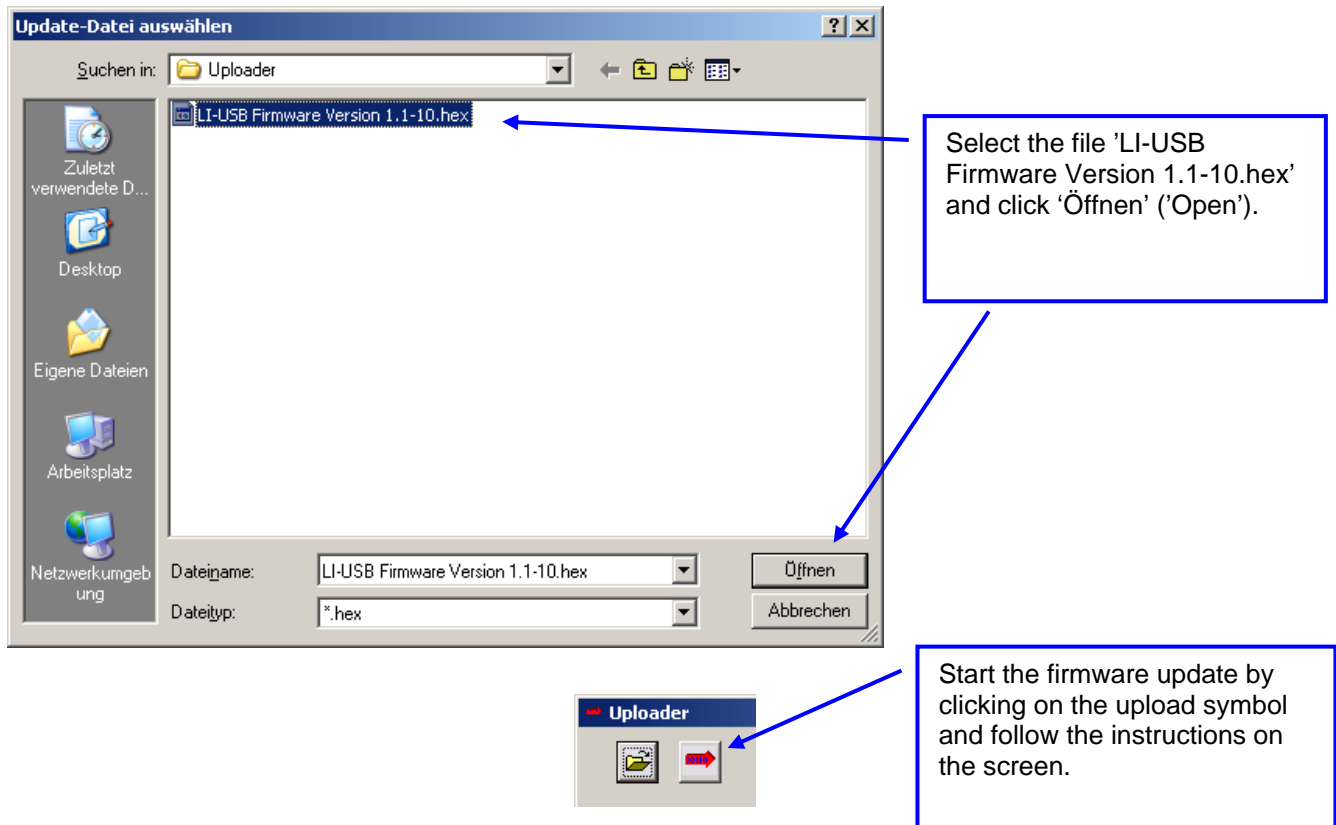


Connect the interface to both the *Digital plus by Lenz*® system and the USB port of your computer.

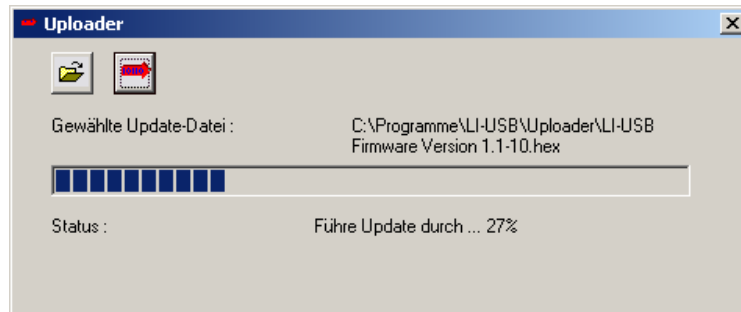
Then, start the software by clicking 'LI-USB Firmware Update'.

Click on the 'Open file' symbol at the top left.





The upload of the new firmware starts. The progress bar indicates the status of the upload.



Confirm the successful upload with 'OK'.



The firmware update is complete; end the uploader.